

Restricted access area

Unauthorised entry prohibited

For public safety

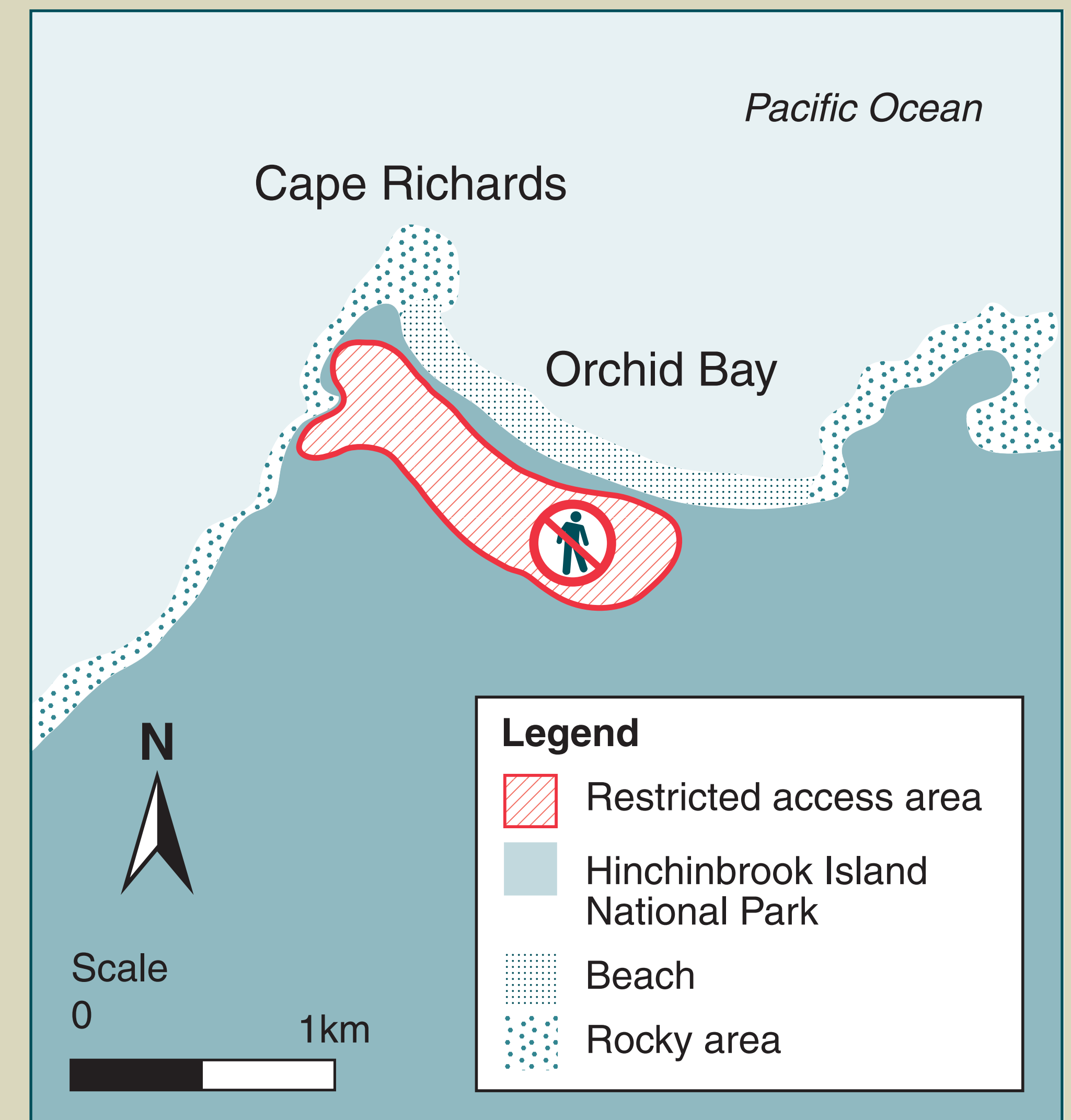
A restricted access area has been declared over the area shown on the map and bound by these symbols.

Entry to the restricted access area is prohibited without a permit or written approval.

Contravention of a requirement of this notice is an offence under the *Nature Conservation Act 1992*.

Maximum penalty: 80 penalty units.

On-the-spot fines apply.



S15469