

# South D'Aguiar shared trails map

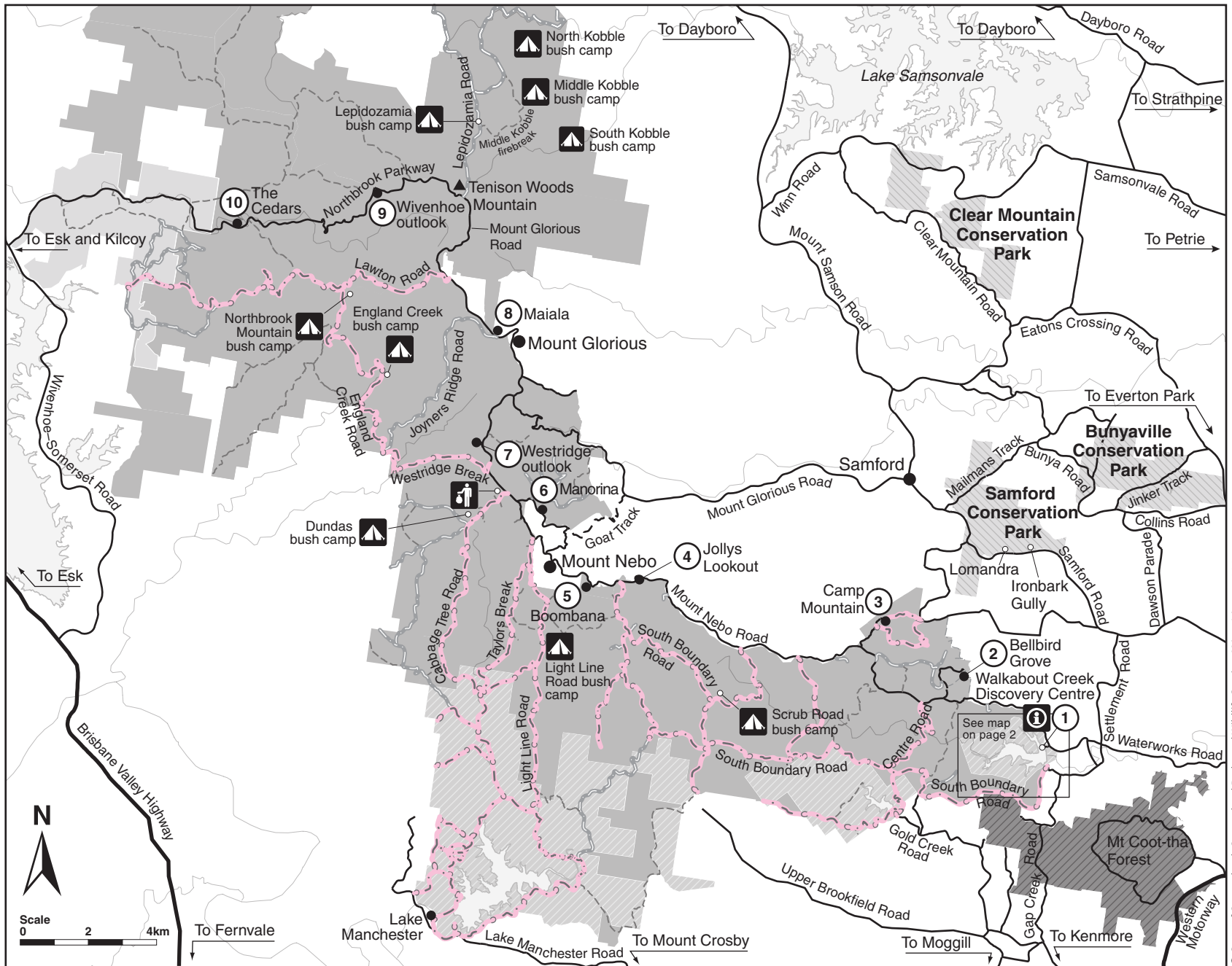
## D'Aguiar National Park

**Legend**

- National park
- Conservation park
- State forest
- Seqwater estate
- Brisbane City Council estate
- Water
- Creek
- Highway
- Sealed road
- Unsealed road
- Management road—walkers only (no horseriding or mountain bikes)\*
- Management road—walkers and mountain bikes (no horseriders)
- Management road—walkers, horseriders and mountain bikes\*

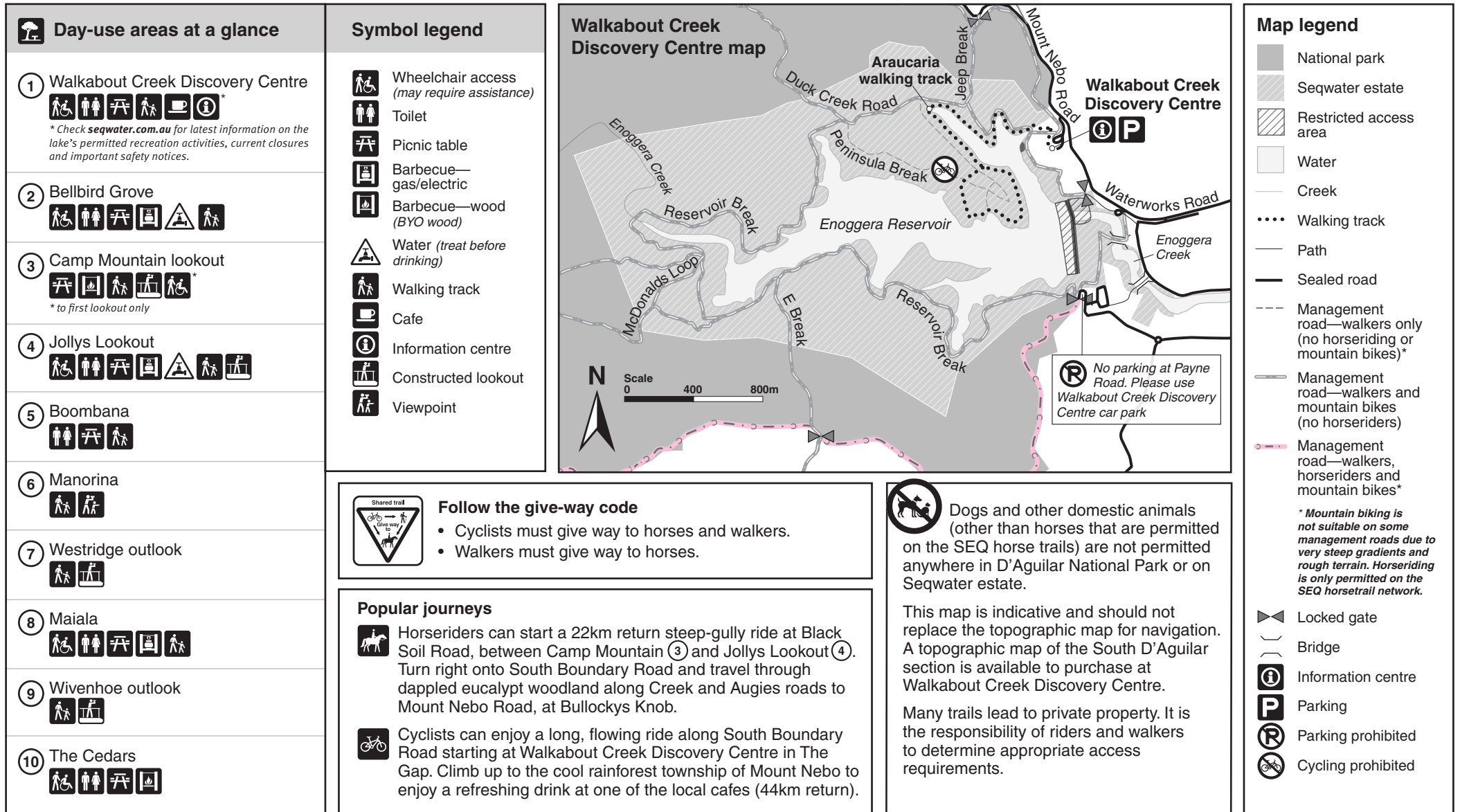
*\* Mountain biking is not suitable on some management roads due to very steep gradients and rough terrain. Horseriding is only permitted on the SEQ horsetrail network.*

- Township
- Visitor information centre
- Camping (bookings required)
- Mount Nebo waste transfer station
- Please see page 2 for day-use area facilities



# South D'Aguiar shared trails map

## D'Aguiar National Park



© State of Queensland. Queensland Parks and Wildlife Service. MA516 August 2021